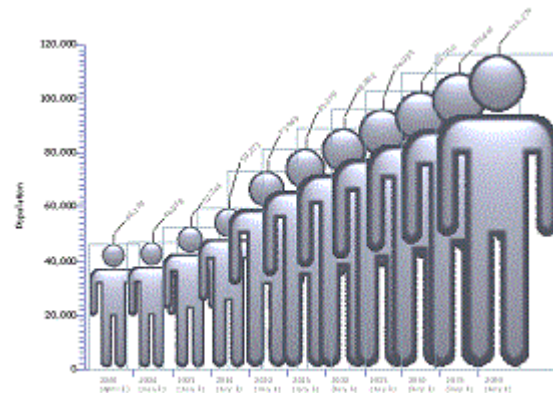


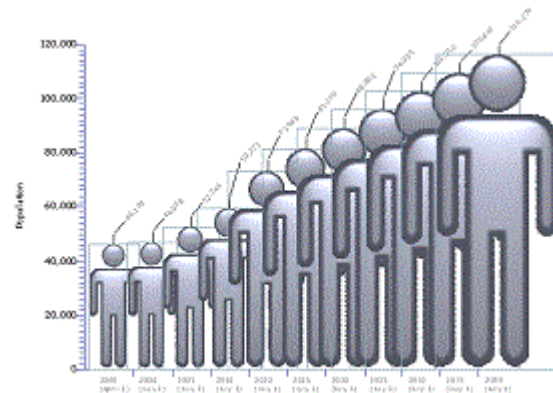
When observation becomes fact – how the 2011 Census results inform population forecasting

Simone Alexander
Presentation for the APA Conference
Melbourne, Dec 2012



DOES observation becomes fact? – how the 2011 Census results inform population forecasting

Simone Alexander
Presentation for the APA Conference
Melbourne, Dec 2012



Presentation outline

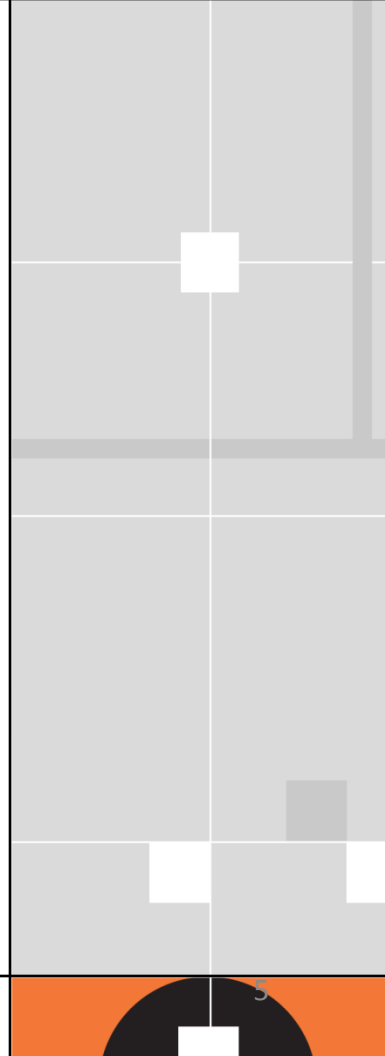
- About .id
- How .id undertakes population forecasts
- What trends we've observed
- What's happened

About .id

- in business since 1997
- core business is demographic profiling and forecasting for local government
- we deliver forecasts to 125 councils Australia-wide (and 1 in New Zealand!)
- our forecast methodology and assumptions are explicit and publically available

How we forecast - methodology

- “bottom up” approach
 - Forecast for the LGA and “small areas”
- Role and function of place
 - Recognising spatial variations within an LGA and how this can change
- Participatory
 - Client feedback to encourage ownership of the numbers
- Three-pronged approach to the model
 - Cohort component model
 - Housing unit model
 - Household propensity model
 - How we treat dwellings critical to the outcome



Significant demographic changes in Australia

- Historic levels of population growth
- Large increases in overseas migration gain
- A reversal in fertility rate trends with decreases becoming minor increases (more babies)
- Continued declining mortality rates (people living longer)
- Changing living arrangements – increases in smaller households

What did we observe?

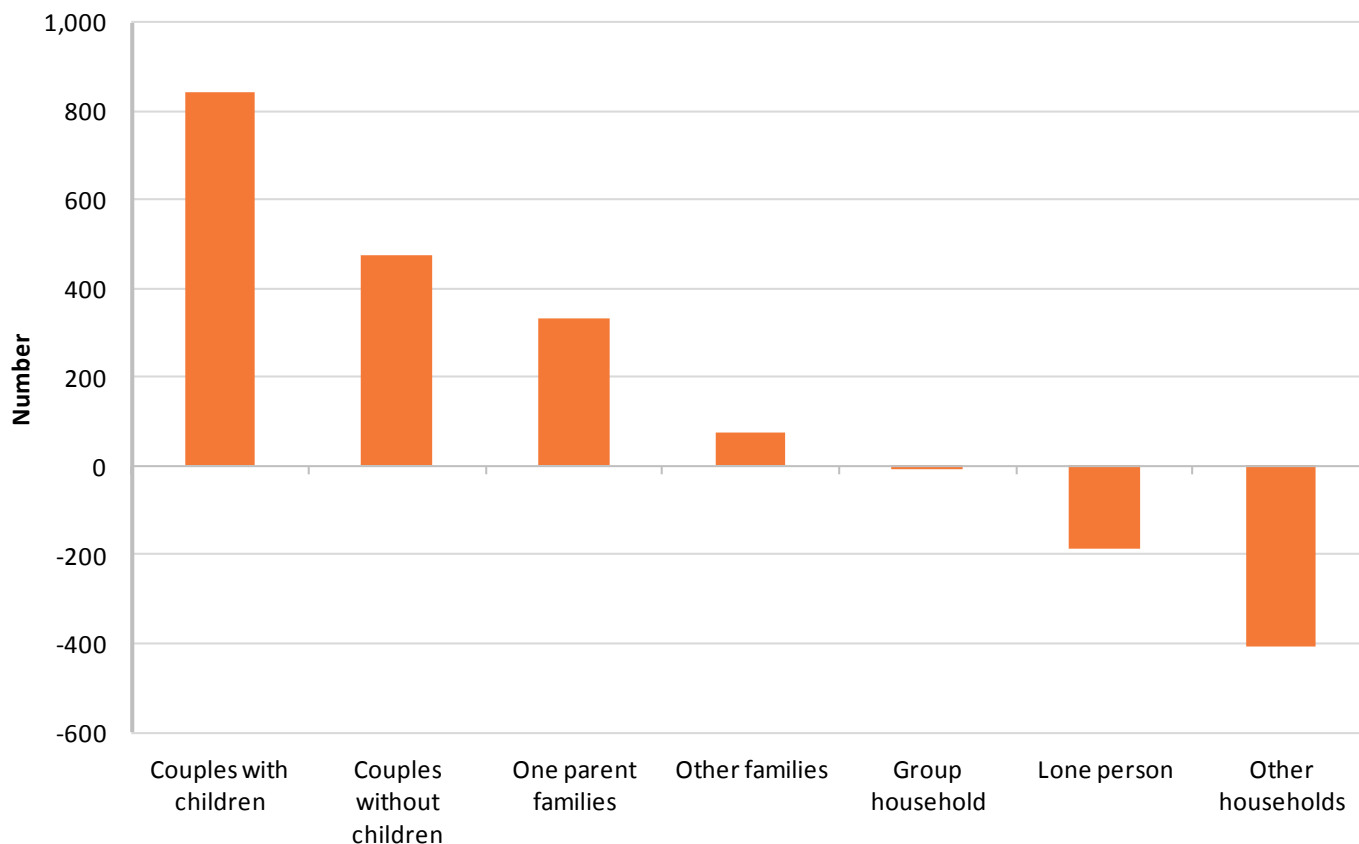
1. How fast was the population growing?
 - Difficult to match ERPs, especially in NSW
2. What was happening in coastal areas?
 - Evidence of low housing demand
3. Were there really that many more babies in the inner city?
 - Role of suburban regeneration
 - Role and function of place

City of Rockdale

- Forecast updated February 2012
- 2010 ERP (2006 based) – 103,164
- .id's estimate – 100,460
- Issues –
 - Low vacancy rate
 - Wolli Creek – marked slow down (GFC)
 - Client feedback
- Only way to match 2010 ERP would be to increase average household size – demographically realistic??



Change in household type, City of Rockdale – 2006 and 2011



Source: ABS, Census of Population and Housing (2006 and 2011)

Eurobodalla Shire Council

- Forecast updated September 2012
- 2011 ERP (2006 based) – 37,846
- 2011 ERP (2011 based) – 36,993
- Issues –
 - Very low rates of development, delayed projects
 - Very low demand for housing (for sale signs)
 - Delayed retirement a possible issue (impacts on migration)
 - Economic slowdown as a result of strong \$AUD
 - No real change in dwelling vacancy between 2006 and 2011 (just under one in three)

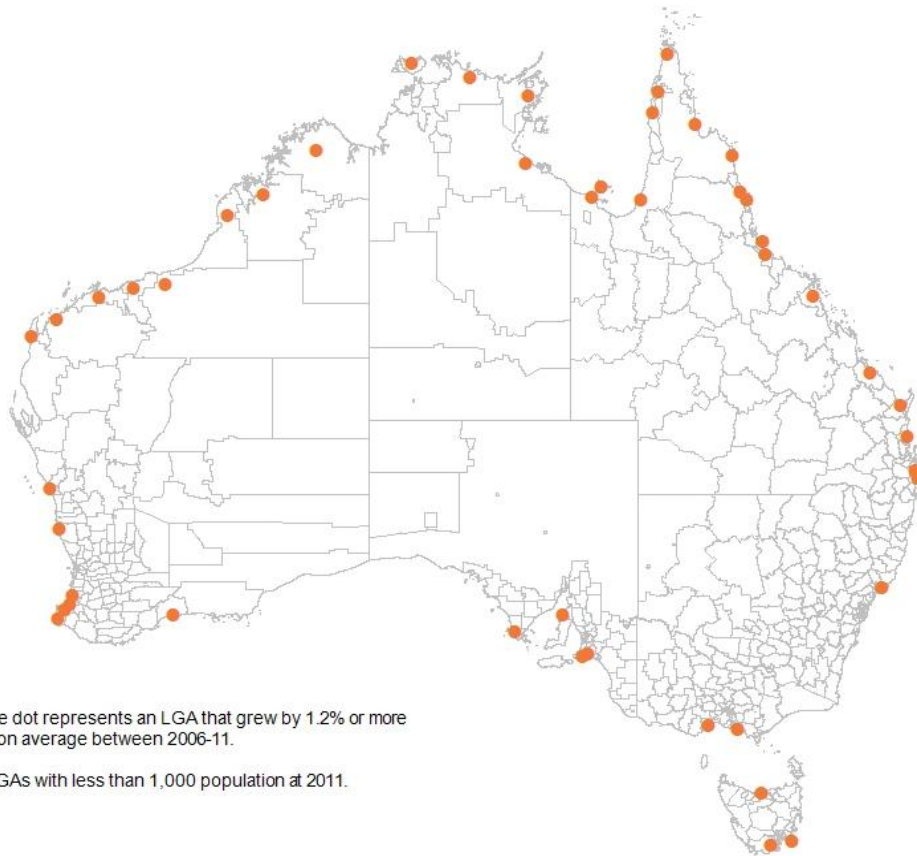


Has the tide turned on coastal growth?

	2001-06	2006-11
Coastal growth	1.7%	1.2%
Total growth	1.3%	1.5%

- many myths associated with coastal growth, but –
 - diverse therefore many drivers of growth
 - recognising spatial variations
 - role and function of place

Coastal LGAs with above average growth, 2006-2011

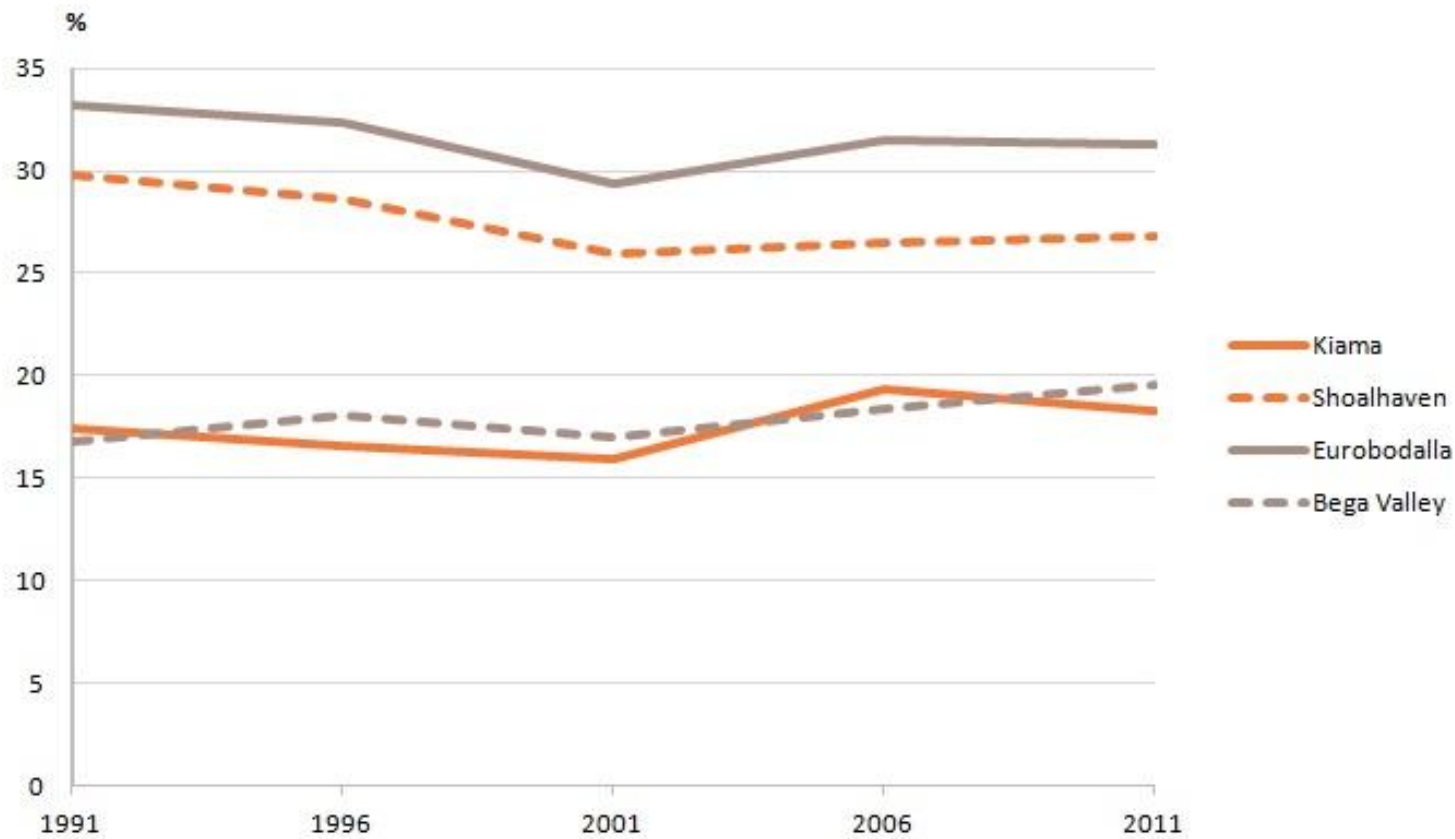


Each orange dot represents an LGA that grew by 1.2% or more per annum on average between 2006-11.

Excludes LGAs with less than 1,000 population at 2011.

Source: ABS, *Regional Population Growth* (Cat. no. 3218.0)

Dwelling vacancy, NSW South Coast – 1991-2011

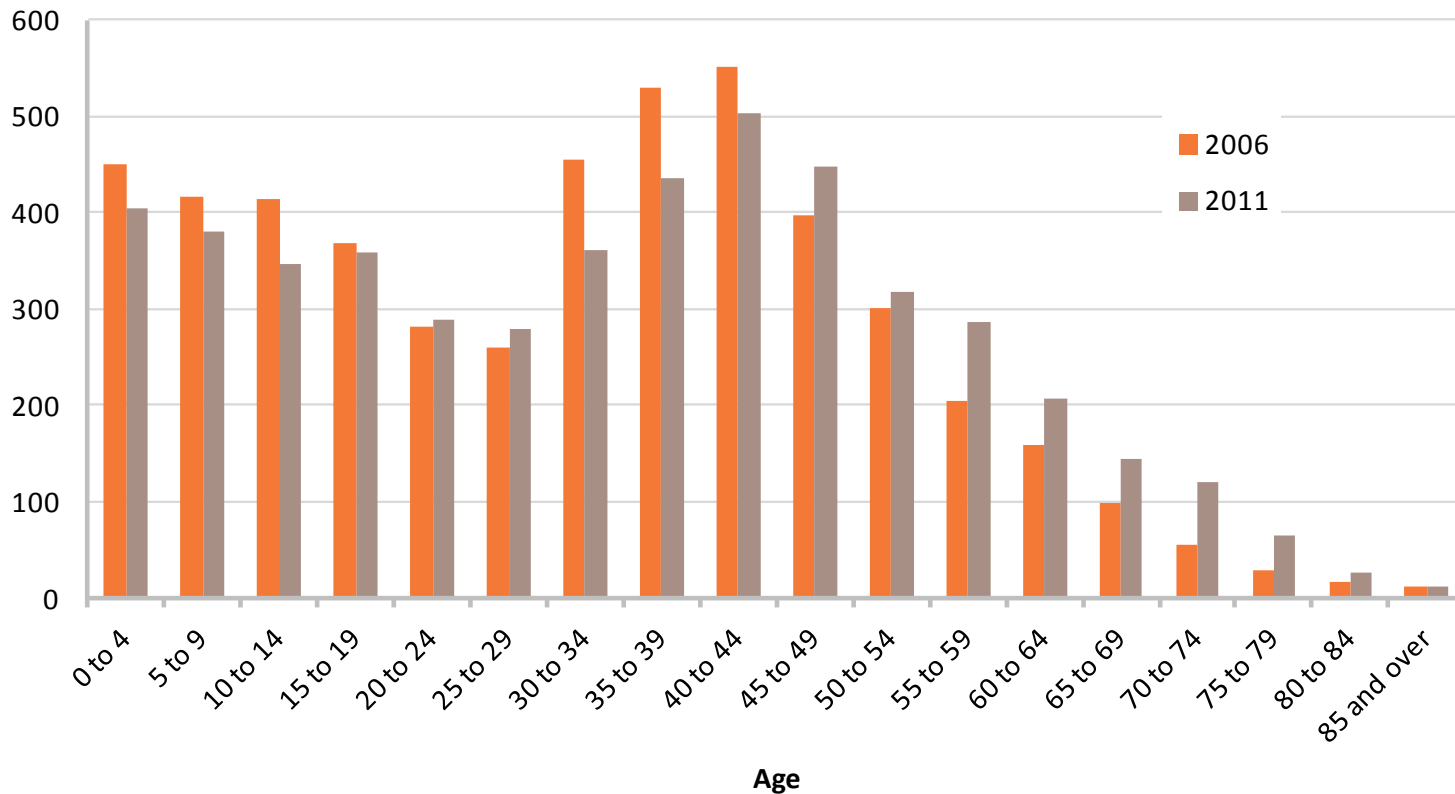


Hobsons Bay City Council

- Forecast updated May 2012
- Issues –
 - Very diverse LGA
 - Moderate growth
 - Suburban regeneration
 - Urban development over many decades
 - Major spatial variations in age structure
 - Client feedback re demand for children's services

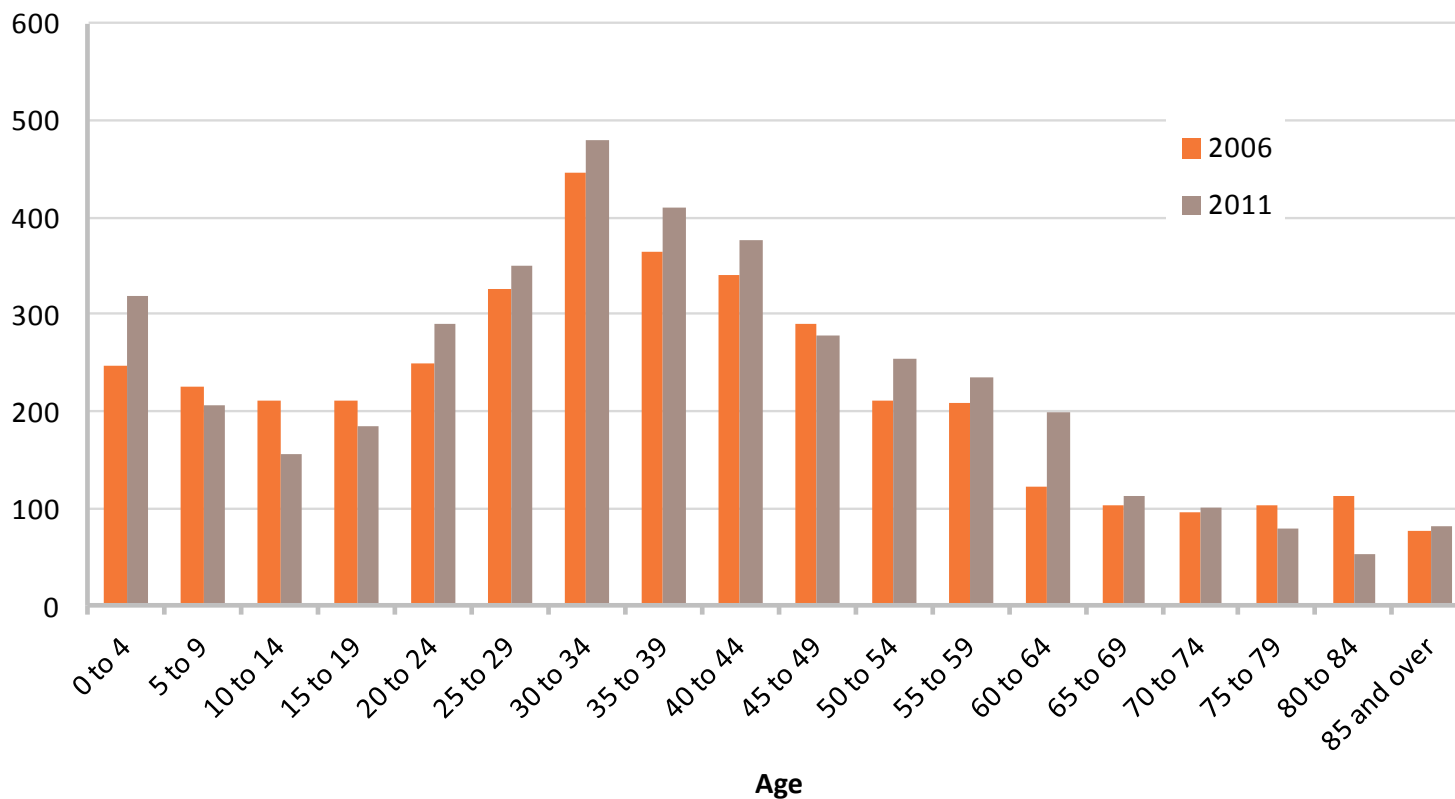


Variations within Hobsons Bay – Seabrook



Source: ABS, Census of Population and Housing (2006 and 2011)

Variations within Hobsons Bay – Spotswood – South Kingsville



Source: ABS, Census of Population and Housing (2006 and 2011)

Concluding remarks and future challenges

- We knew things were changing, but how it changed wasn't quite how we thought -
 - The new PES methodology and its impact on rebasing has created uncertainty
 - Still need to use the data (client demand)
 - How much have populations actually changed?
 - Census data DOES provide the evidence base
 - Some debate around the future direction of vacancy rates and fertility
 - Changing role and function of place